

# SPIRIT OF SAGINAW



## BAND 101



## DIRECTOR TEAM

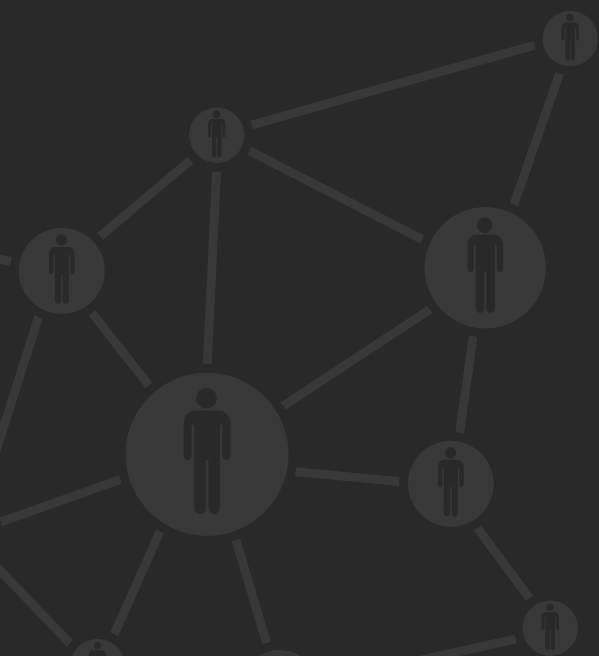
Matt Pearson - Director of Bands - [mpearson@ems-isd.net](mailto:mpearson@ems-isd.net)

Alyson Holley - Associate Director of Bands - [aholley@ems-isd.net](mailto:aholley@ems-isd.net)

Jenn Giba - Assistant Director/Percussion Director - [jgiba@ems-isd.net](mailto:jgiba@ems-isd.net)

Jesse Rajabi - Assistant Director - [jrajabi@ems-isd.net](mailto:jrajabi@ems-isd.net)

Art Grossman - Color Guard Director - [agrossman@ems-isd.net](mailto:agrossman@ems-isd.net)







## ABOUT US

The Spirit of Saginaw Band program consists of approx. 200 students who are involved in one or more of our performing ensembles:

- Marching Band
- Wind Ensemble
- Symphonic Band
- Concert Band
- Jazz Band
- Drumline/Indoor Drumline/Percussion Ensemble
- Color Guard/Winter Guard

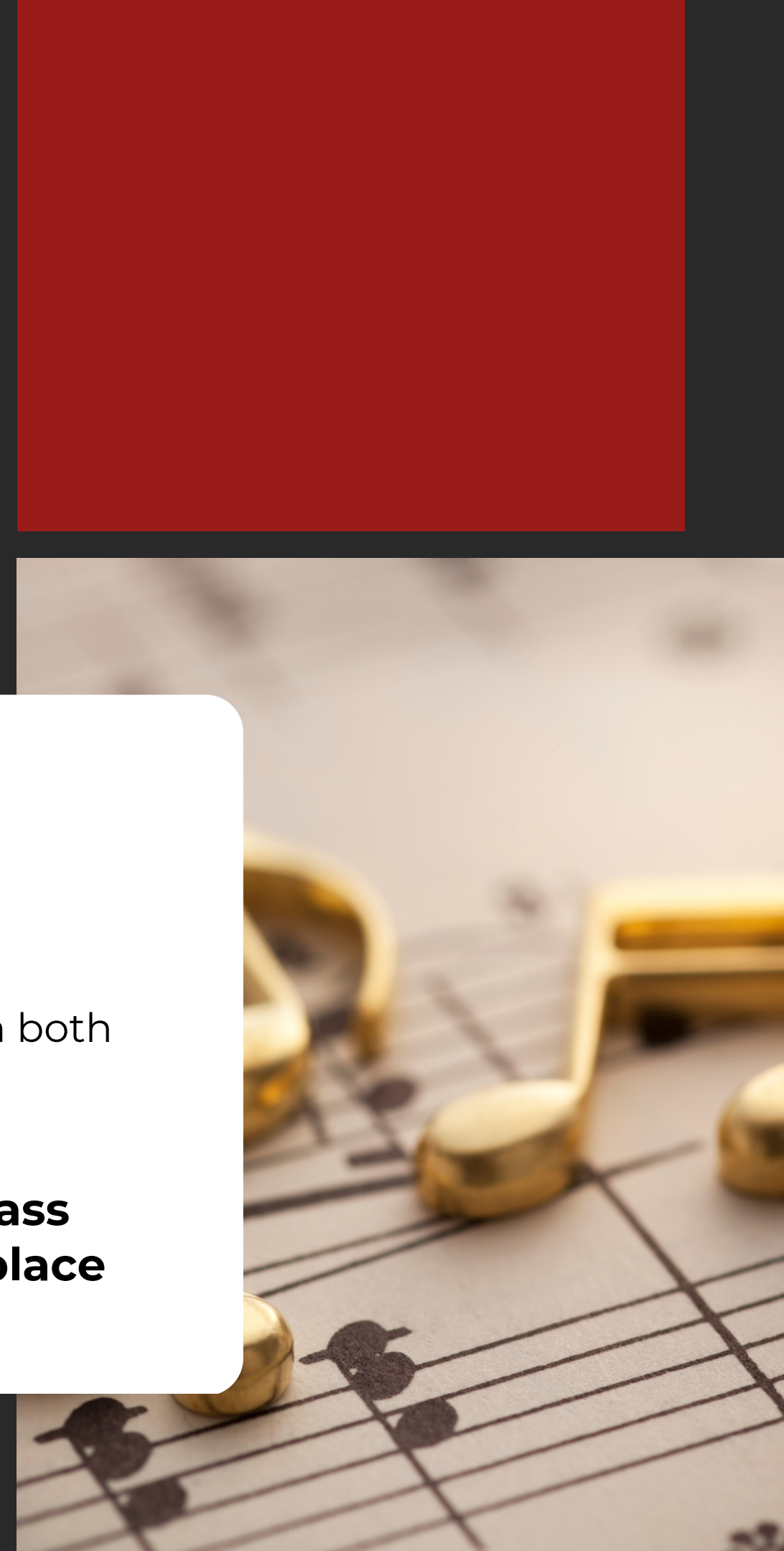
[Read More](#)



### **All students are in the Spirit of Saginaw Band Program**

Every student participates in both  
Marching Band & a Spring  
Ensemble

**Informal auditions for class  
period placement take place  
April 10-13**

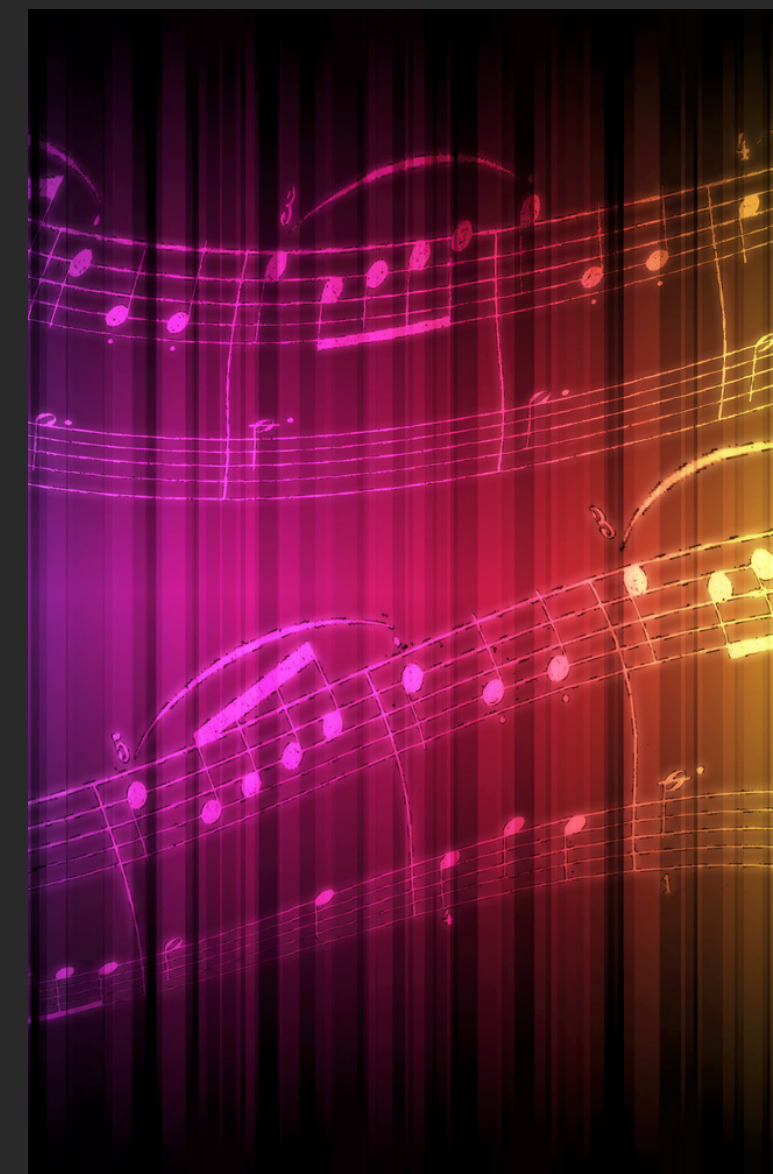
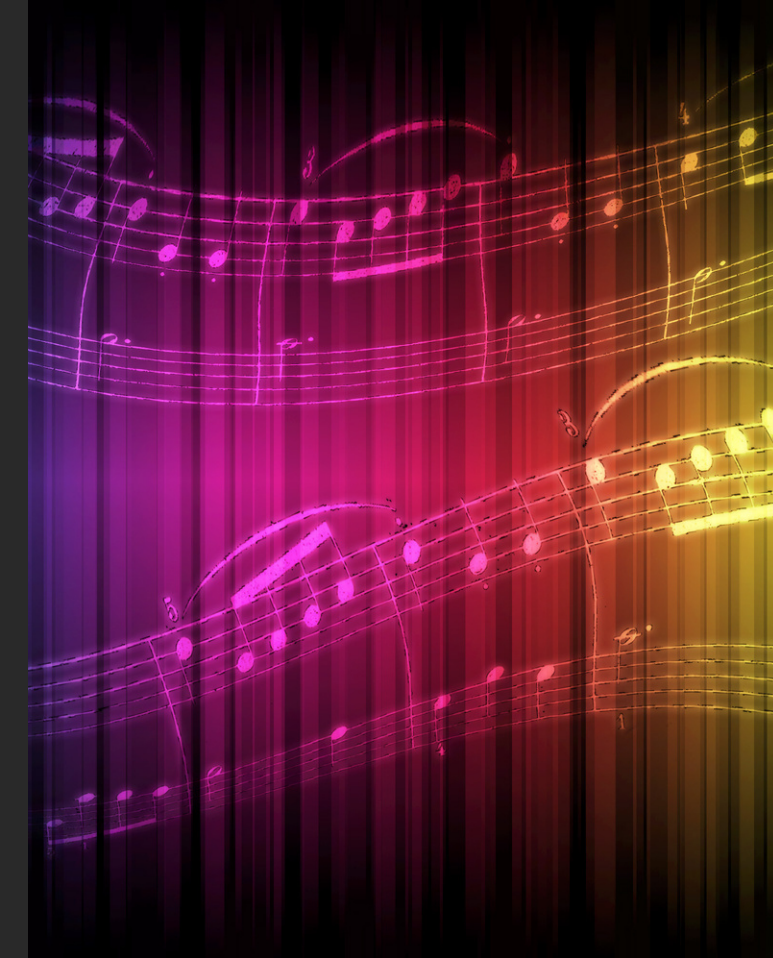
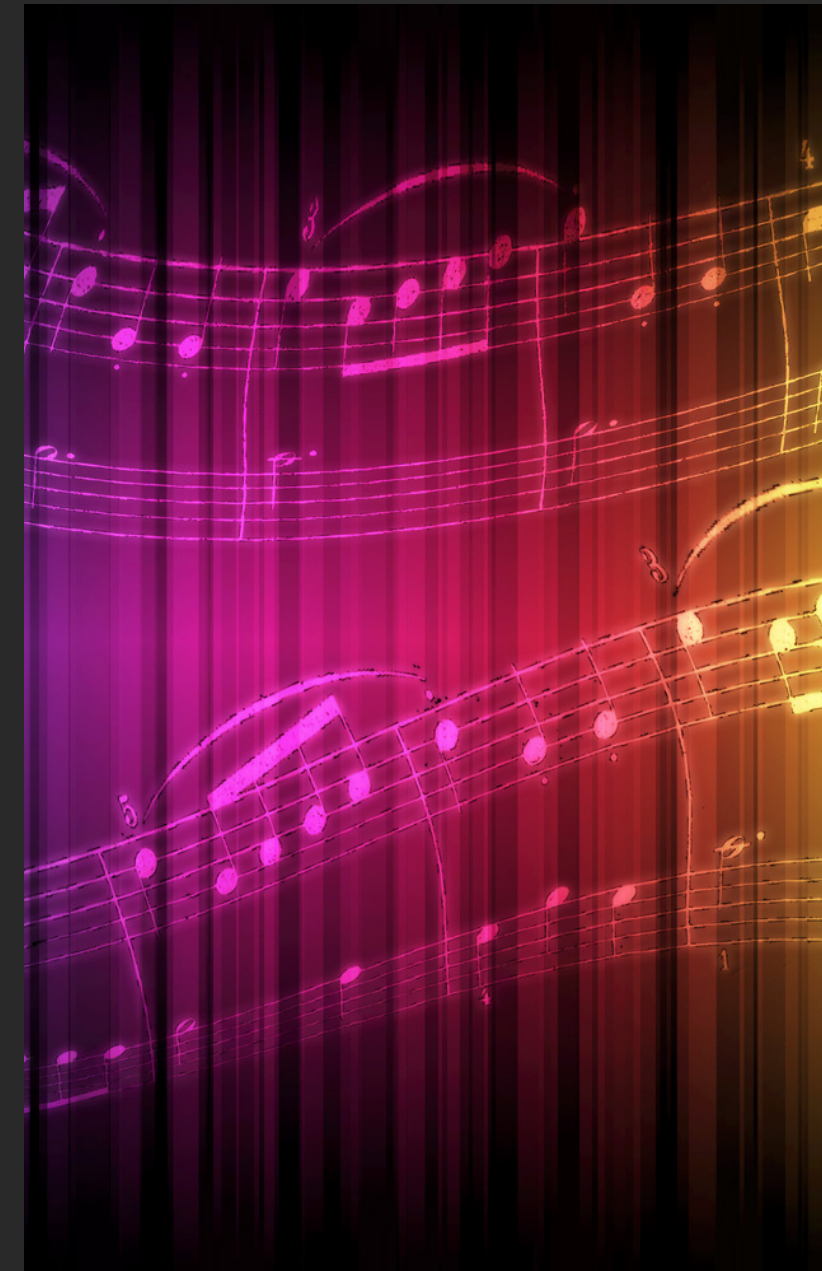






## WHY JOIN US

- PE Credit (must do minimum of two marching band seasons)
- Fine Arts Credit
- Traits & Skills that will help you to be hireable in any future career:
  - Goal Setting
  - Work Ethic
  - Responsibility
  - Collaboration
  - Time Management
  - Leadership
  - Discipline
  - Family & Team Work
  - Diligence
  - Body Awareness & Health
  - Life-long Friendships
  - A Home with people who care about you!



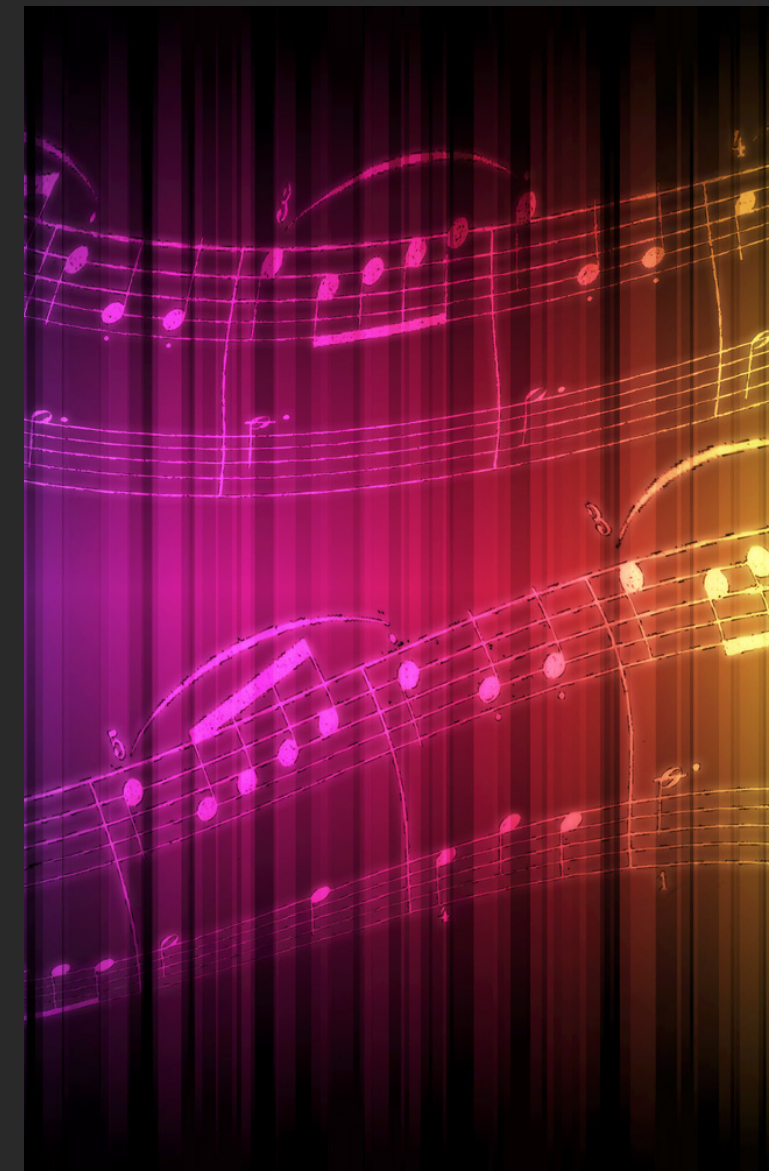
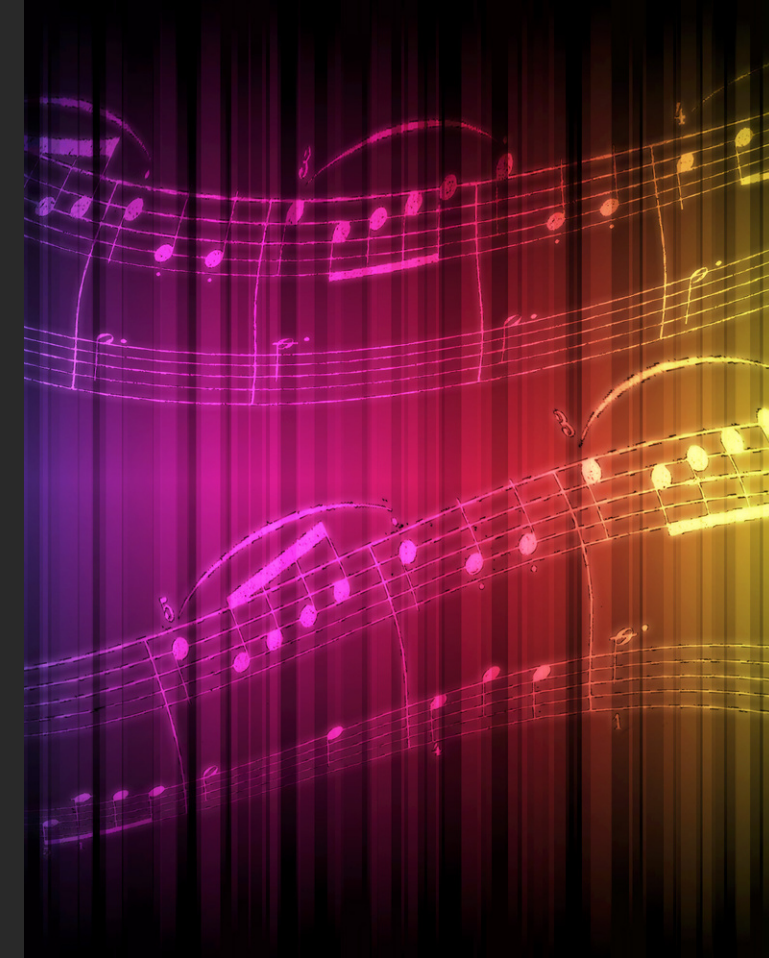
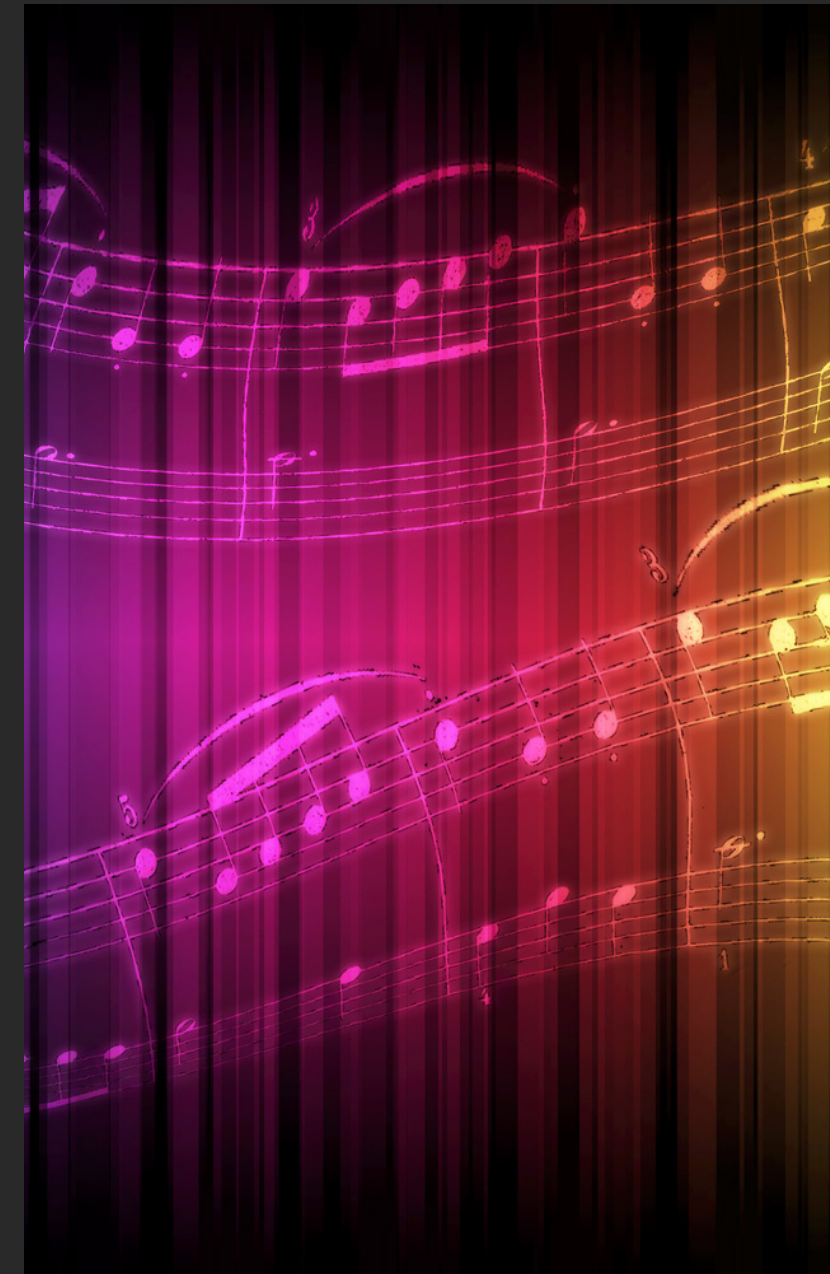




## WHY JOIN US

"I could go on...I don't pay for band. I pay for the opportunities that band provides my kids with to develop attributes that will serve them well throughout their lives and give them the opportunity to bless the lives of others. From what I have seen so far, I think it is a great investment!"

- Band Parent







## WHY JOIN US

- We also have the BEST kids on campus!
  - Valedictorian
  - Salutatorian
  - Top 10
  - Top 10%
  - AP Scholars
  - National Merit Scholars
  - Class Officers
  - Officers for NHS, Spanish Club, Tri-M, UIL AND MORE!
  - Homecoming King & Queen
  - Students earn top scholarships to college/universities

*Y'all  
We are  
awesome*







## WHY JOIN US

- AND we get to go on some pretty awesome trips!
  - 2006 - Houston
  - 2008 - New York
  - 2010 - Disney World
  - 2012 - Italy
  - 2015 - Winter Park, Colorado
  - 2017 - Disney World
  - 2019 - Ireland
  - 2023 - Disney Land



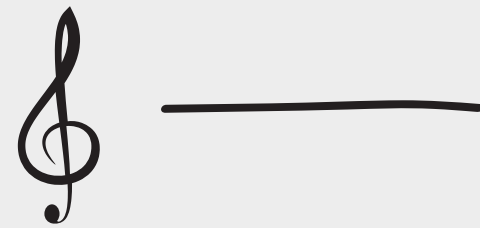
***Fine Arts***



# Question 01



I don't know how to march! Can I do band?



YES! Did you know how to play your instrument before beginner band? We will teach you to march!





# MARCHING BAND

Every student is in the Marching Band!  
Each student will audition for a varsity position in August band camp.

All students will:

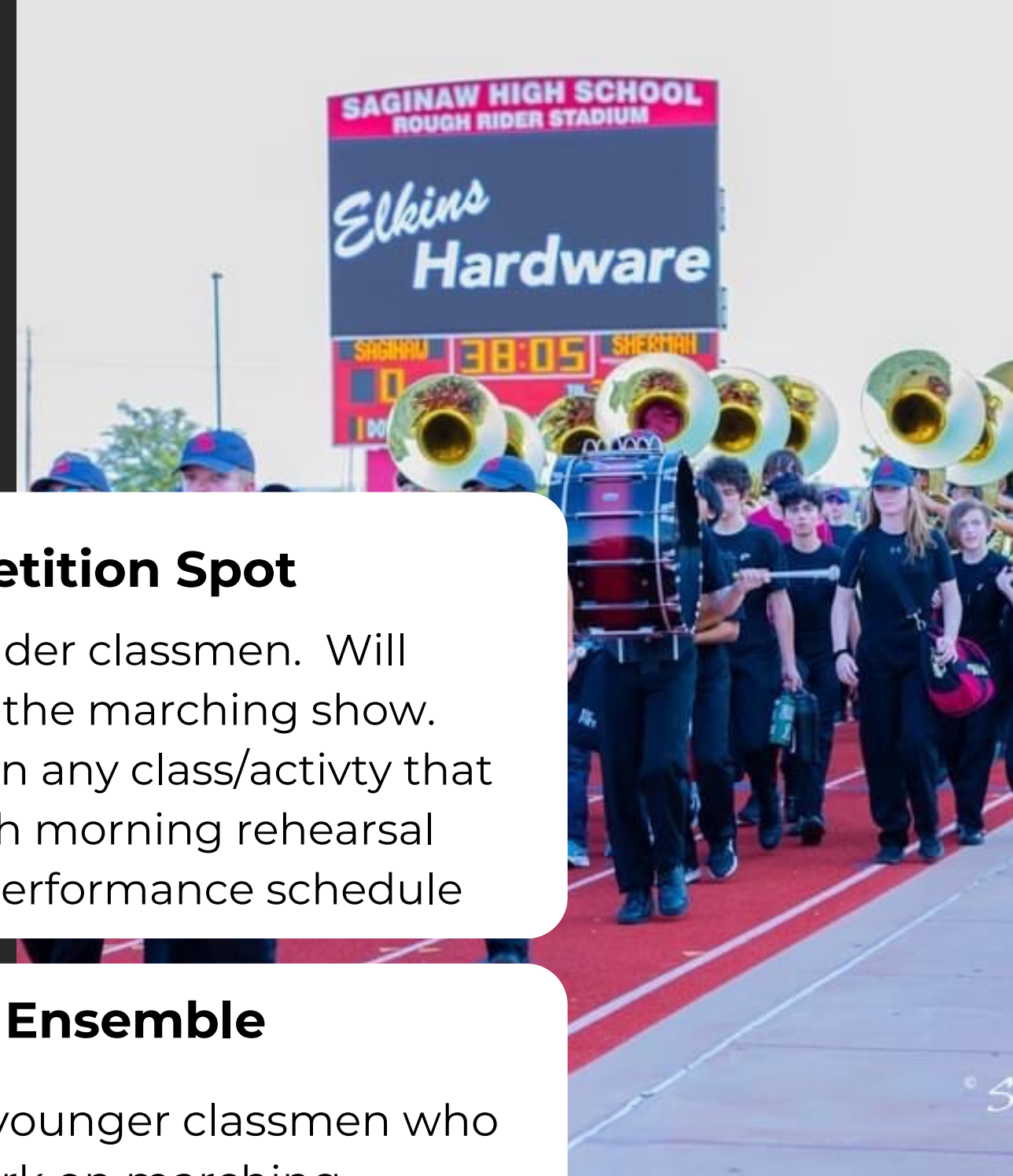
- Attend Summer Band Camp
- Attend all Home & Away football games
- Perform in the stands and at half time for the Star Steppers at all home & away football games.
- March a Friday Night spot
- Attend all Saturday Competitions
- Attend all scheduled marching band rehearsals during the school year.

## 01. Competition Spot

Oftentimes older classmen. Will march & play the marching show. Not enrolled in any class/activity that interferes with morning rehearsal schedule or performance schedule

## 02. Visual Ensemble

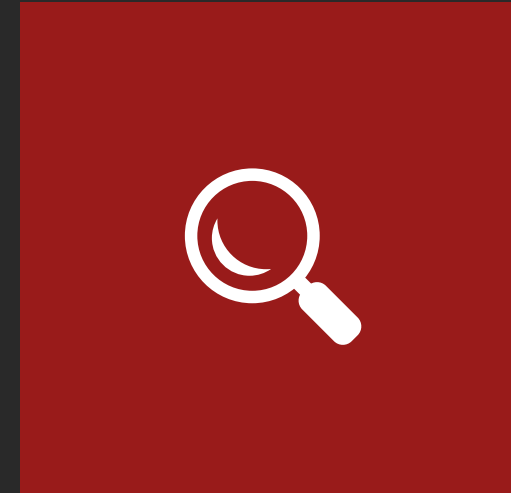
Oftentimes younger classmen who still need work on marching fundamentals. Will help with visual content of the marching show.





## RESOURCES AT YOUR FINGERTIPS

With a large program, there is ALWAYS information available to you. Help us help you by searching, bookmarking, and following our platforms.



### Band Website

<https://www.emsisd.com/Page/1632>



### Remind Account

<https://www.emsisd.com/Page/23890>



### Booster Website

<https://spiritofsaginawband.com>



### Growing Up

@Saginaw Band Boosters (FB)  
@spiritofsaginaw (Insta)  
@SpiritofSaginaw (Twitter)



# Question **02**



I'm in athletics/other activity? What if they meet at the same time?

Communication is key, and is your responsibility. We work well with coaches and work together to give students the maximum opportunities at SHS. When you communicate, we can all plan ahead and split time 50/50.

# Question **02.5**



Can my student do band and take HCTC classes? Join other groups?

YES! You can take AP classes, take HCTC classes, and be part of as much as you want at Saginaw!

Communication is key, and is your responsibility. When you communicate, we can all plan ahead!



# Items You Need for Band

- Black 3-Ring Binder with Sheet Protectors
- Tuner with Peterson Tuning Pick-Up Clip OR TE Tuner on Cell Phone
- Breathing Tube (1/4" diameter) PVC Tube with valve from Hardware Store
- Solid Black Under Armour Compression shirt & shorts
- LONG Black Socks



## Percussion Equipment

- 4 Matching Yarn Marimba Mallets
- 1 Pair Concert Snare Sticks
- 1 Pair Marching Snare Sticks
- 1 Pair Timpani Mallets
- Mallet Bag - with name on it!



# Woodwind Equipment

- 5 Reeds, rotated daily
- Legere Transparent reed for marching band (clarinet & sax)
- Flute with B Footjoint
- Clarinet 5RV Mouthpiece & Bonade Inverted Ligature
- Saxophone Optimum AL3 Mouthpiece & Ligature
- 2-3 Oboe/Bassoon Reeds

# Brass Equipment

- Trumpet Bach 3 Mouthpiece
  - Step-up horn: Intermediate to Professional model recommended
- Horn Holton Farkas MDC Mouthpiece
- Trombone Bach 5G Mouthpiece
  - Step-up horn with Large Bore F attachment
- Euphonium Bach 5G Mouthpiece
- Tuba Miraphone TU33 or equivalent mouthpiece





# Other items you'll need on your SOS Band Adventure!

1

Always arrive atleast 15 minutes early to any rehearsal

2

Water Jug filled with H2O - Put your name on it  
Sunglasses, Hat, Sunscreen, Athletic clothing for marching band

3

Instrument, Music, Pencil, Highlighter for all rehearsals/classes

4

UnderArmour compression shirt & shorts for under marching band uniform

5

Long Black Socks

6

Concert Clothing = "Tuxedo" look - Black Dress Pants (NOT JEANS), White Dress Shirt, Black Sport Coat, Black Bow Tie, Black socks & Dress shoes  
Black Dress/Outfit - Arms & Legs covered



## PRIVATE LESSONS

This is the BEST way to become better at your instrument.

Scholarships available to those who qualify.

All our teachers are professionals on their instruments!



**Increase Skills**



**More Connections**



Evan Danforth - Sophomore - All State Musician

*Better  
Individuals  
Better Band - Jenn  
Gibbs*





Jan

Feb

Mar

Apr

May

Jun

Jul

Aug

Sep

Oct

Nov

Dec



# Band Camp Schedule

7a-11a - Outside usually

Lunch

12-4p - Inside

Dinner Break on your own

6-8p - Outside\*\*\* (on specific days)

Weekends as assigned\*\*\*



Jan

Feb

Mar

Apr

May

Jun

Jul

Aug

Sep

Oct

Nov

Dec

# Fall Weekly Schedule

Rehearsal 7-8:30am

Mon-Fri

Football Game Fri.

Contest All Day Sat.  
(end Sept.- beginning  
Nov.)

MONDAY

TUESDAY

WEDNESDAY

THURSDAY

FRIDAY

SATURDAY

Jan

Feb

Mar

Apr

May

Jun

Jul

Aug

Sep

Oct

Nov

Dec



# Friday Football Day

4:20 - school dismisses

Home Game - rehearsal 4:30-5

Change into Uniform and eat dinner (provided) 5-5:45

March to Stadium - 6

Kickoff - 7

Half Time - 8

Game ends - 10

Dismiss - 11



Jan

Feb

Mar

Apr

May

Jun

Jul

Aug

Sep

Oct

Nov

Dec



# Saturday Contest Day

Arrive for Rehearsal 4 -5 hours before performance time

Performance

Lunch/Dinner (provided)

Prelims Announcement

Finals Performance

Travel to SHS

Dismiss

In short, contests are an ALL DAY event

Jan

Feb

Mar

Apr

May

Jun

Jul

Aug

Sep

Oct

Nov

Dec

# After Marching Band Schedule

November Band

Auditions

All-Region & SHS

Musical - Nov/Dec

December Winter

Concert

MONDAY

TUESDAY

WEDNESDAY

THURSDAY

FRIDAY

SATURDAY



Jan

Feb

Mar

Apr

May

Jun

Jul

Aug

Sep

Oct

Nov

Dec

# Spring Schedule

Sectionals Before/After

School 1x a week

Indoor

Drumline/Winterguard

Rehearsals in evenings

Indoor

Drumline/Winterguard

Contests on Weekends

MONDAY

TUESDAY

WEDNESDAY

THURSDAY

FRIDAY

SATURDAY

Jan

Feb

Mar

Apr

May

Jun

Jul

Aug

Sep

Oct

Nov

Dec

# Spring Schedule

Pre-UIL Concert after

Spring Break

UIL April

Band Auditions late

April

Solo/Ensemble in May

Band Banquet in May

MONDAY

TUESDAY

WEDNESDAY

THURSDAY

FRIDAY

SATURDAY



# Question **03**



It's raining? That means no rehearsal...right?

Wrong! We have great facilities and will  
rehearse inside!

# Question 04



Is there a grade requirement for band to participate?

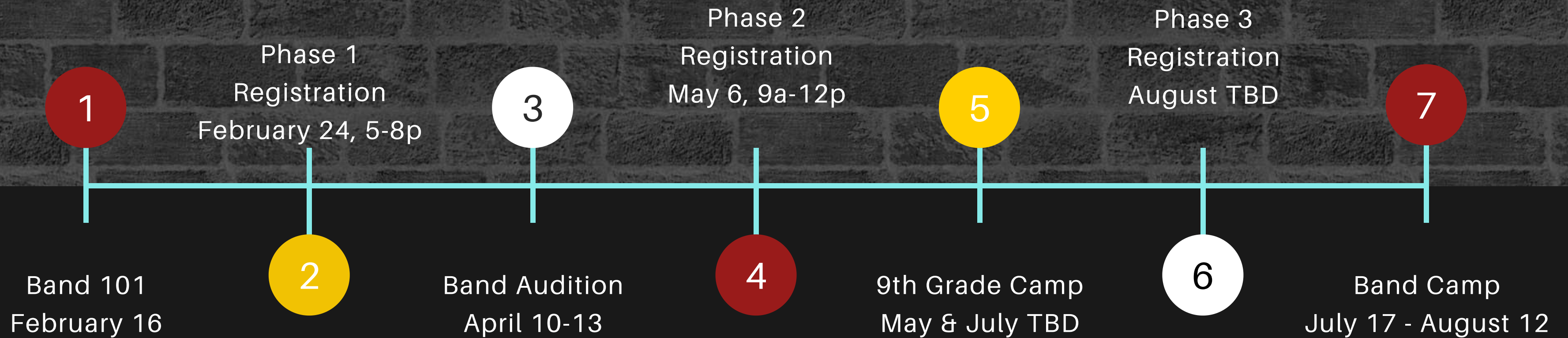
For marching band, there is the UIL No Pass  
No Play Rule.

All students must be passing ALL classes each  
6 weeks to participate at games & contests.



# Timeline to 2023-2024

Becoming a SOS Member



# Question 05



What does an audition look like?

---

You will play 1 or 2 excerpts from music to demonstrate your playing skill.

**Everyone makes the band.** This helps us to place you in one of the 3 class periods.



# Phases of Registration

1

**FEBRUARY 24 - 5PM-8PM**

- In-person at SHS
- Complete Google Intake Form
- Pay \$100 Deposit
- Purchase extra items

2

**MAY 6 - 9AM-12PM**

- In-person at SHS
- Complete Fine Arts release forms
- Window to turn in physical = May 1-August 1. Every student is required to complete a NEW physical each year. Send to Mrs. Holley
- Make monthly payments on band dues

3

**AUGUST TBD**

- Uniform Fitting
- Continue making payments on band dues. 50% paid.



**CAMPS**

- 9th grade camp in May/July (optional)
- Fit & Fun camps Tues/Thurs during Summer (optional)
- Drum/Guard Camp (mandatory) - \*July 17 week
- Band Camp (mandatory) - \*July 24 - August 12

# Question 06



How long should registration take? \_\_\_\_\_

We will open up portions that can be completed before you arrive, but **EVERYONE** must come in person.

Each registration event should take approx 30-45 minutes.



# THE FUN PART

\$\$\$

01

## Returning Band/Percussion

\$551

02

## New Band/Percussion

\$604

03

## Returning Color Guard

\$558

04

## New Color Guard

\$761

Payment Plans Available. Drafts taken on the 20th day of the month.

**All dues MUST be paid by November 1.**

**Financial Aid available** - MUST turn in the letter from the School District or other government agency ON February 16.

**FA total dues = \$300**

\*\*\* Indoor Drumline & Winter Guard have separate dues in the Spring





# Receive a 5% discount when paid in FULL!

\$100 deposit due February 24 in person.  
Mail payments to the Booster PO Box or Pay  
Online with automatic withdrawals each  
month after.

Saginaw Band Boosters  
900 N Blue Mound Rd Ste#144-120  
Saginaw, TX 76131

---

# Question 07



Do you offer financial assistance? How do I qualify?

Yes we do!

You must provide the letter from the district that shows you qualify for reduced lunches.  
This is due at the first registration.



# Additional Items

- \$50 Instrument Rental for:
  - Oboe
  - Bassoon
  - Bass Clarinet
  - Tenor/Baritone Saxophone
  - French Horn/Mellophone
  - Euphonium/Baritone
  - Tuba/Sousaphone
  - Percussion
- Extra shirts
- Band Bag
- Yard Sign



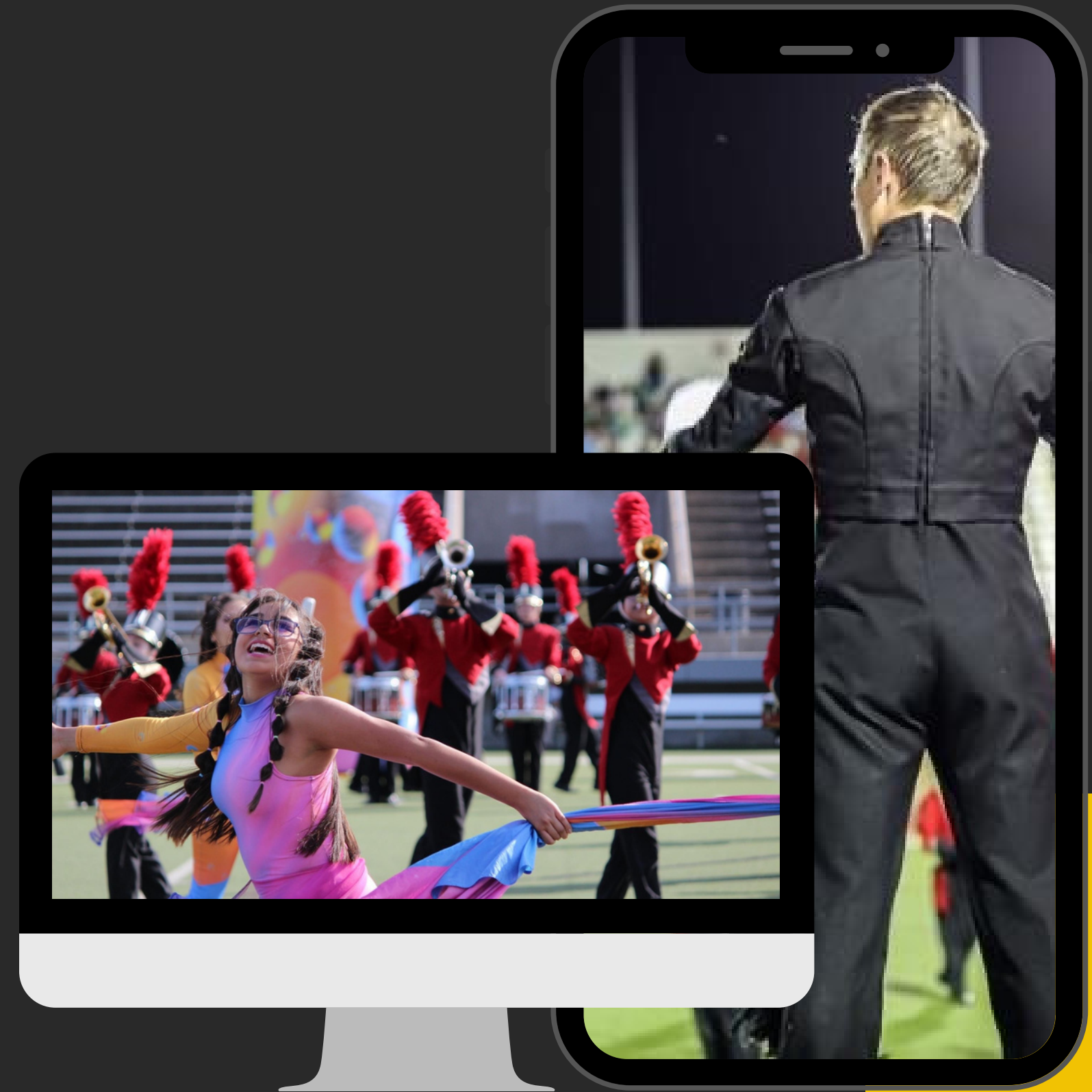


# FUNDRAISING

We try not to do too much fundraising, so we have ONE main band fundraiser.  
It's success helps to keep band dues as low as possible.

## FanPledge Telethon

- Each student collects 20 names, emails & phone numbers
- Asks for pledges during a 1 hour time frame in August
- All proceeds go to the Spirit of Saginaw Band to bring in instruction, equipment, and other needed materials.
- We average \$30k+ raised each year.



# VOLUNTEER WITH SOS BAND!



Hi there! My name is

# Lance

and I'm your kind of parent  
volunteer!

- Join the Band Booster Club
- Volunteer to help OUR students
- Attend monthly meeting on 2nd  
Tuesday of the month
- Lead







# VOLUNTEER OPPORTUNITIES

## Transportation

Chaperone on Bus.  
Help pass out water at  
games/contests.

## Loading Crew

Help students safely load  
the semi trailer with  
instruments & props

## Uniforms

Size students  
Clean  
Hem

## Concessions

HUGE Fundraising for the  
program at football games.

## Section Parent

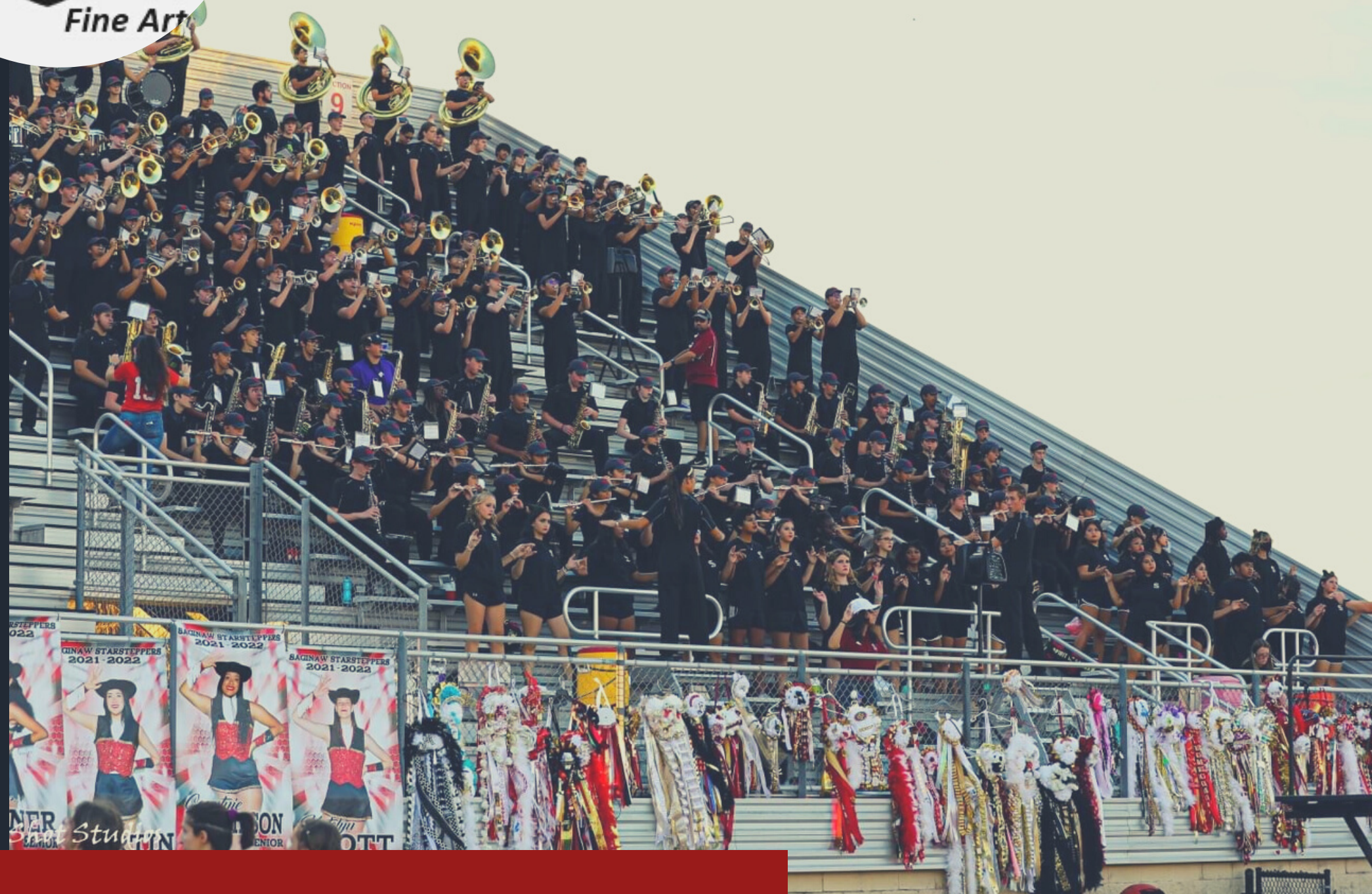
Sponsor a section and be a  
role model  
Uniform cleaning

## Driver

Have a CDL or know  
someone who does? We  
need a driver!

## Meals

Pass out food to students



**SPIRIT OF  
SAGINAW BAND**



## **CONTACT US**

**Booster President**

[sosbandpresident@gmail.com](mailto:sosbandpresident@gmail.com)

**Booster Treasurer**

[sosband.treasurer@gmail.com](mailto:sosband.treasurer@gmail.com)







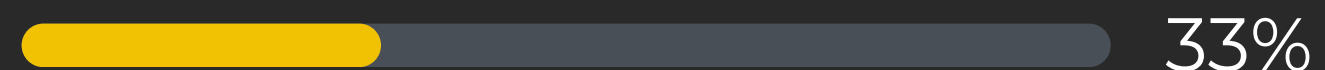
## UNLOCK THE INFO

YOU are the model of responsibility for your student.  
This includes staying informed.

**What we think our kids tell us is happening in SOS Band**

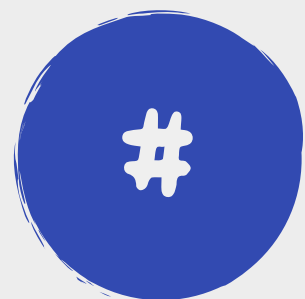


**What they actually tell us is happening in the SOS Band**



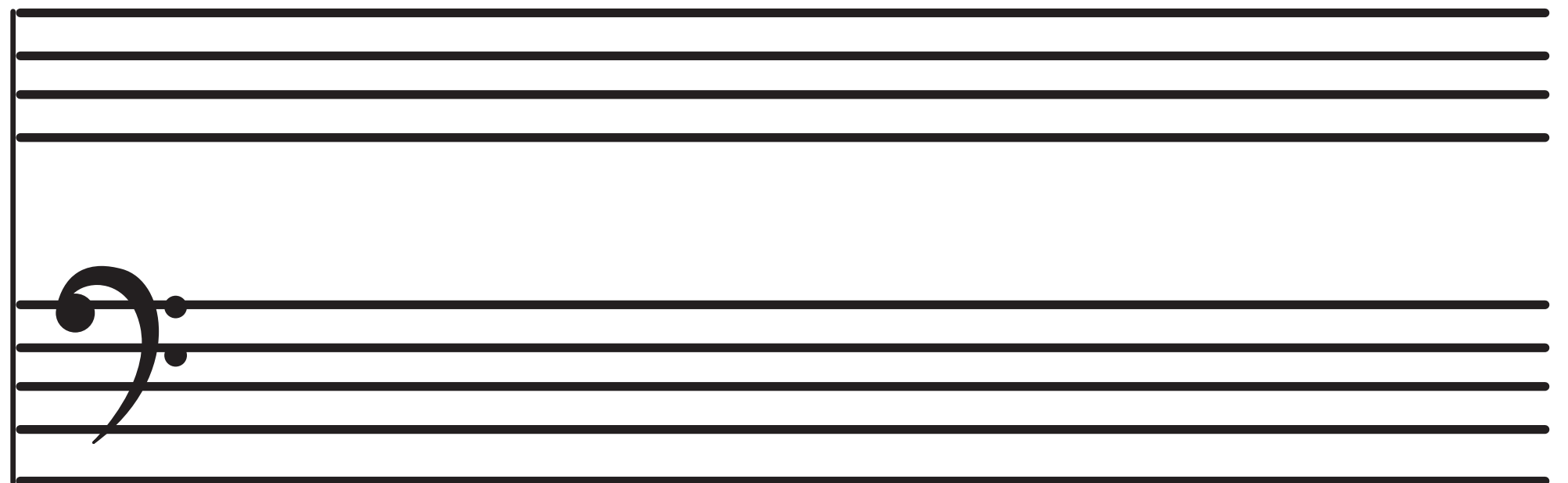


# Question



Elephant in the room...What about Eagle Mountain HS?

Your student will learn the skills here that will transfer to EMHS, where THEY will be the leaders on campus, establishing the legacy there.  
Ask Mr. Pearson - He was part of the opening of SHS.

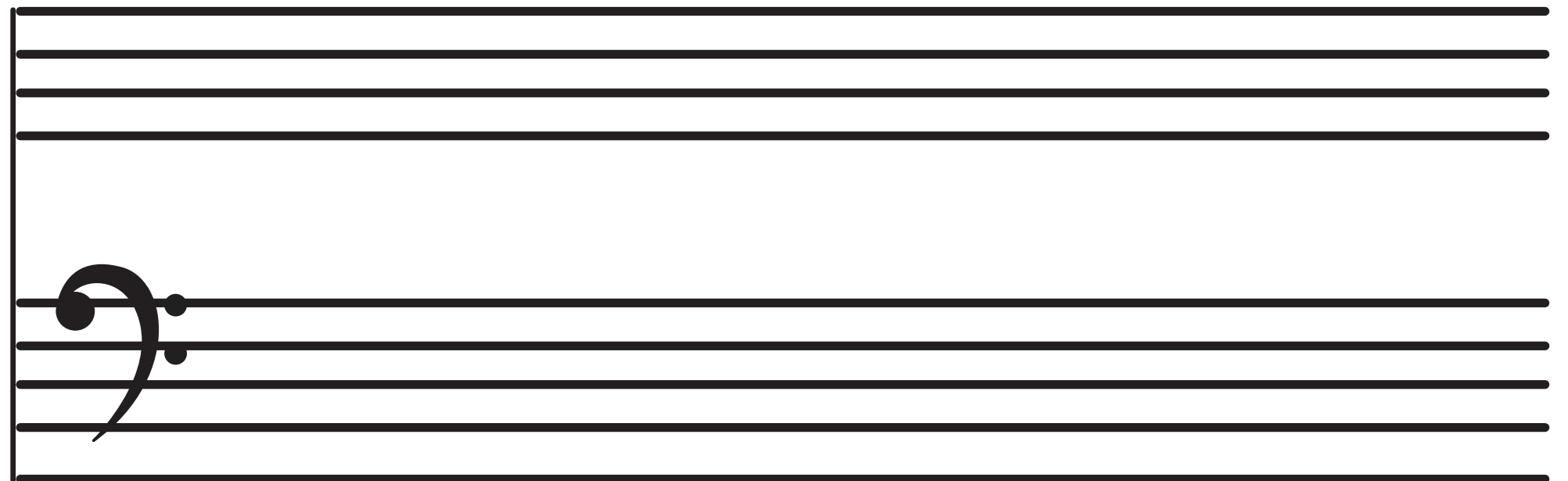


# Question



What else do you want to know?

Contact Directors or Band Booster Officers if you  
have more questions.  
Check out our website as well





## RESOURCES AT YOUR FINGERTIPS

With a large program, there is ALWAYS information available to you. Help us help you by searching, bookmarking, and following our platforms.



**EAGLE MOUNTAIN  
SAGINAW ISD**  
Fine Arts



### Band Website

[https://www.emsisd.com/  
Page/1632](https://www.emsisd.com/Page/1632)



### Remind Account

[https://www.emsisd.com/  
Page/23890](https://www.emsisd.com/Page/23890)



### Booster Website

[https://spiritofsaginawband.  
com](https://spiritofsaginawband.com)



### Growing Up

@Saginaw Band Boosters (FB)  
@spiritofsaginaw (Insta)  
@SpiritofSaginaw (Twitter)